



REYNA
Formwork for Secure Connect



**FORMWORK
CATALOGUE**

ABOUT REYNA

Reyna Steels Ltd- A Formwork Division of RINOX is a pioneer in Formwork Accessories. It endeavors to stay ahead of its peers and competitors by harnessing the sophisticated and state of the art machinery and Production methods. Reyna provides essential services, facilities and technology upon which the growth and development of a modern community depends

- Spread over Area 35250 Sq Yards
- Design Engineering & Product Development
- Quality Testing & Validation .
- Conventional Turning Machines
- Advanced Manufacturing with CNC Turning & Milling Machines
- Conventional Turning Machines
- Advanced Manufacturing with CNC Turning & Milling Machines

Although we're proud of our Products, services, and technology, nothing matches the pride we have in our people. We learnt long ago that we're really in the business of building relationships. For that reason, we put a premium on retaining only the most qualified individuals to serve on our team. We have a team with years of experience. Every person on our team is committed for providing excellent customer service and Producing high-quality Products.

OUR VISION

100%
CUSTOMER ORIENTED

Reyna Steels Ltd is 100% customer oriented and our goal is to provide our customers with the highest Quality Lowest Maintenance- Formwork Fittings. Our Team Members are highly-skilled and take pride in creating solutions that best fit the exacting needs of our customers.



Our Mission

Our mission is to partner with our customers to bring beauty and safety to their living spaces by providing Formwork Solutions that exceed their expectations.



Our Values

Quality First - Quality for all our customers, internal and external, comes first. We design and build the quality product at the source insuring 100% conformance to what we promise to our customers.



Customer Driven

We believe we exist because of satisfied customers, and we are committed to providing full customer satisfaction over the long term. We will seek out, fully understand, and meet or exceed the needs of our customers.



Partnership with People

People are the key to our success. We are dedicated to the education, development and involvement of all Reyna team members.



Honesty

We treat our colleagues, our suppliers and our customers with honesty, trust and respect. We work together as an integrated, cross-functional team with a common goal of achieving full customer



Integrity

Our integrity must never be compromised. We stand behind our products and our word. We deliver a quality Product at a fair price to every customer. We honor the commitments we make.



Continuous Improvement

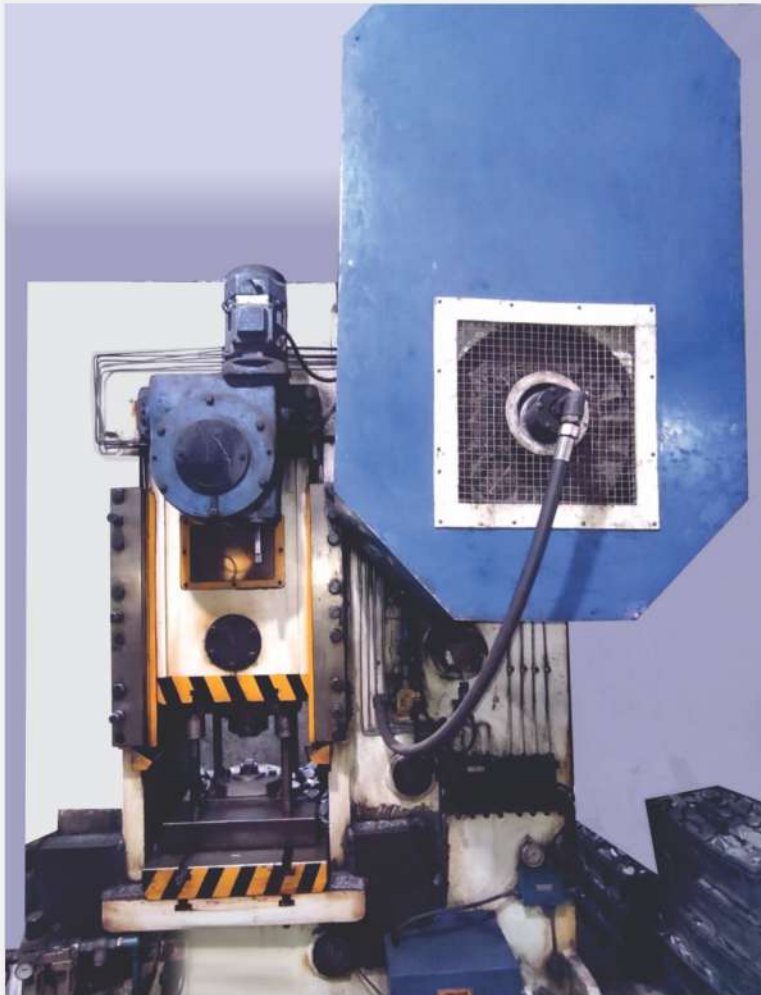
Continuous improvement is a part of everyone's job everyday. We seek out root causes, measure and visibly display performance information, and make decisions based on facts and data.



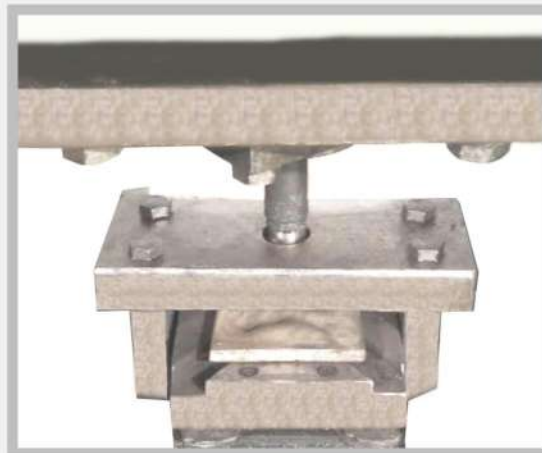
Superb Work Environment

We are committed to maintaining a superb work environment— safe, clean, well-organized, open and secure, to insure the highest quality products and services are produced for our customers.

OUR PBarUCTION CAPABILITY



REYNA Products are developed in a state-of-art research & development cell involved in creating cost effective solution for all types of architectural requirements. Each Product is carefully designed and monitored at each stage of Production. The R&D center works in close association with the marketing team , understanding the specific requirement of the customers and creating Products that offer perfect solution to the customer's needs. REYNA has in-depth knowledge and capability to effortlessly convert Products between various manufacturing processes including casting, pressing, welding and machining to ensure that you get the finest Products.





CNC MACHINE SHOP

We have with us well established CNC machine shop facility that is equipped with precision machining, milling and turning equipment which supports all involved in-process demands. With presence of CNC (computer numerical control) facilities, we are able to bring better optimization in Productivity as well as match up with the exact specifications detailed by the customers. These CNC machines are well handled by experienced support staff that allows us to deliver raw Products in fully machined conditions .

CONVENTIONAL MACHINE SHOP

Reyna Steels Ltd offers a high-tech, state-of-the-art manufacturing facility geared to today's quality and economic needs. Since its inception, Reyna has progressively expanded its manufacturing and worldwide Product line to include every type/ grade/ shape metal Product. We have the ability to manufacture precision components in almost any size, grade and surface finish and meet the requirements for your application. Through exclusive equipment design and on-site manufacturing processes, Reyna has developed a reputation for serving the needs of both large and small volume users . . . from prototypes to high volume Production quantities.



INDEX

15 mm

8-14

Waler Plates	8-9
Combination Plate with Wing Nut	10
Tie Bar Connectors	11-12
Steel Cones	13
Weldable Anchor	14
Rock Anchor	14

20 mm

16-18

Waler Plates	16
Tie Bar Connectors	17
Steel Cones	18

26 mm

20-23

Waler Plates	20
Tie Bar Connectors	21-22
Steel Cones	23

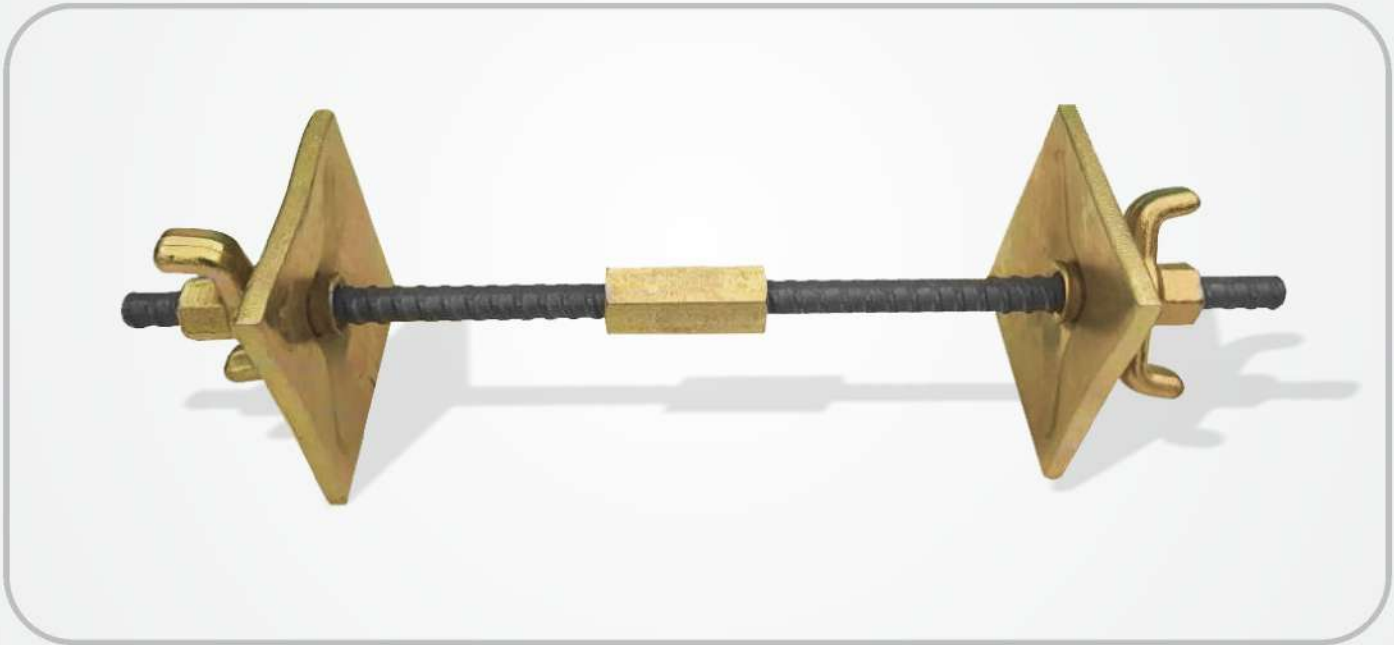
Accessories

24

Waler Round Plates	24
Tying Wires	24



REYNA
Formwork for Secure Connect



Formwork
Accessories

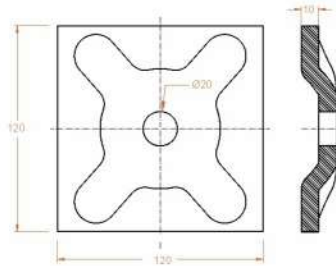
15 mm

15 MM

Waler Plate

Code
WP15120

Finish
Natural



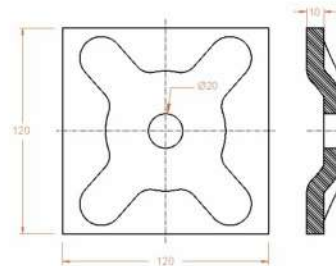
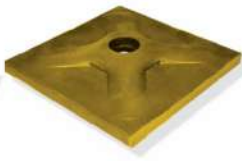
SIZE:
120x120x10mm

WALER PLATE, 120x120x10.0 mm, Hole 20 mm, for Tie Bar 15 mm, MILD STEEL, NATURAL

Waler Plate

Code
WP15120-O

Finish
Golden Zinc Plated



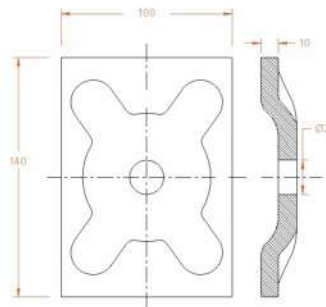
SIZE:
120x120x10mm

WALER PLATE, 120x120x10.0 mm, Hole 20 mm, for Tie Bar 15 mm, MILD STEEL, GOLDEN ZINC PLATED

Waler Plate

Code
WP15140

Finish
Natural



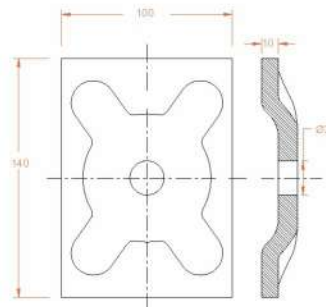
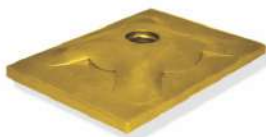
SIZE:
140x100x10mm

WALER PLATE, 140x100x10.0 mm, Hole 20 mm, for Tie Bar 15 mm, MILD STEEL, NATURAL

Waler Plate

Code
WP15140-O

Finish
Golden Zinc Plated



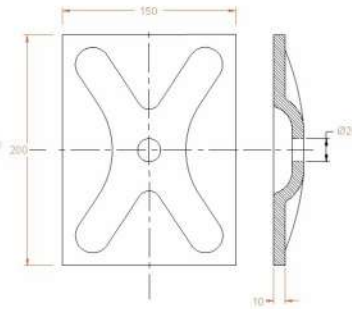
SIZE:
140x100x10mm

WALER PLATE, 140x100x10.0 mm, Hole 20 mm, for Tie Bar 15 mm, MILD STEEL, GOLDEN ZINC PLATED

Waler Plate

Code
WP15200

Finish
Natural



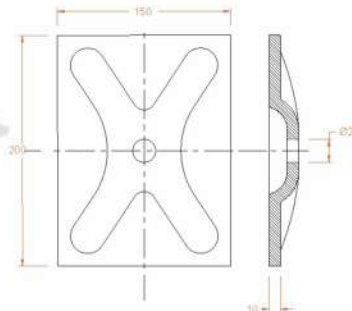
SIZE:
200x150x10mm

WALER PLATE, 200x150x10.0 mm, Hole 20 mm, for Tie Bar 15 mm, MILD STEEL, NATURAL

Waler Plate

Code
WP15200-O

Finish
Golden Zinc Plated



SIZE:
200x150x10mm

WALER PLATE, 200x150x10.0 mm, Hole 20 mm, for Tie Bar 15 mm, MILD STEEL, GOLDEN ZINC PLATED



Combination Plate With Wing Nut

Code
CBPN120-O

Finish
Golden Zinc Plated

SIZE:
120x120x10mm

COMBINATION PLATE, with Wing Nut, Hex 27,
120x120x10mm, for Tie Bar 15 mm, MILD STEEL, GOLDEN
ZINC PLATED



Combination Plate with Wing Nut

Code
CBPN100-O

Finish
Golden Zinc Plated

SIZE:
100x140x10mm

COMBINATION PLATE, with Wing Nut, Hex 27,
100x140x10mm, for Tie Bar 15 mm, MILD STEEL, GOLDEN
ZINC PLATED



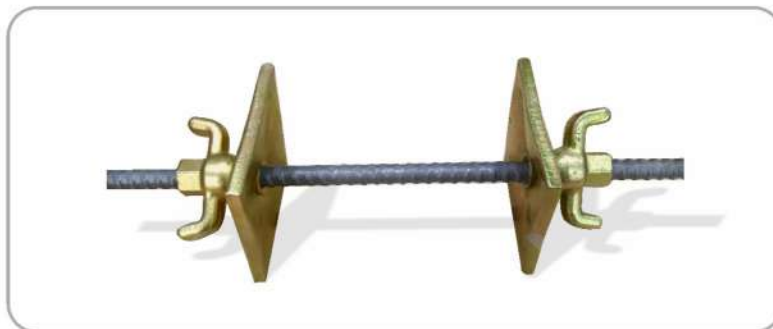
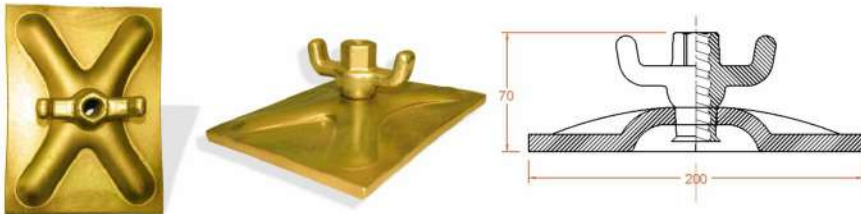
Combination Plate With Wing Nut

Code
CBPN200-O

Finish
Golden Zinc Plated

SIZE:
200x150x10mm

COMBINATION PLATE, with Wing Nut, Hex 27,
200x150x10mm, for Tie Bar 15 mm, MILD STEEL,
GOLDEN ZINC PLATED



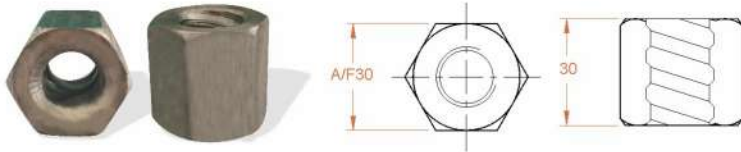
Tie Bar Connectors

Code
HN3030
HN3030-Z

Finish
Natural
Zinc Plated

SIZE:
 30x30mm

HEX NUT, A/F 30x30 mm, for Tie Bar 15 mm,
 MILD STEEL, NATURAL, ZINC PLATED



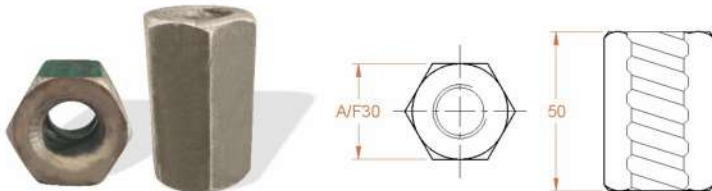
Tie Bar Connectors

Code
HN3050
HN3050-Z

Finish
Natural
Zinc Plated

SIZE:
 30x50mm

HEX NUT, A/F 30x50 mm, for Tie Bar 15 mm, MILD STEEL,
 NATURAL, ZINC PLATED



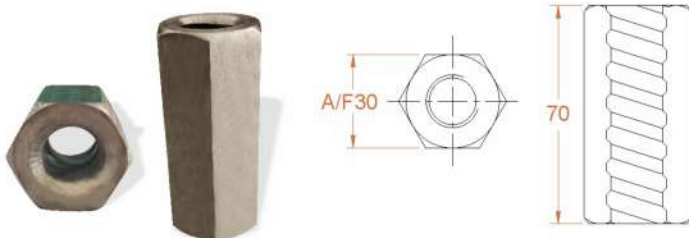
Tie Bar Connectors

Code
HN3070
HN3070-Z

Finish
Natural
Zinc Plated

SIZE:
 30x70mm

HEX NUT, A/F 30x70 mm, for Tie Bar 15 mm,
 MILD STEEL, NATURAL, ZINC PLATED



Tie Bar Connectors

Code
HC30100
HC30100-Z

Finish
Natural
Zinc Plated

SIZE:
 30x100mm-With Pin

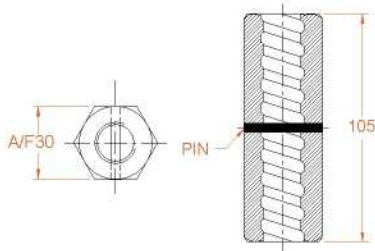
HEX COUPLER, A/F 30x100 mm, with Pin, for Tie Bar 15
 mm, MILD STEEL, NATURAL, ZINC PLATED



Tie Bar Connectors

Code
HC30105
HC30105-Z

Finish
Natural
Zinc Plated



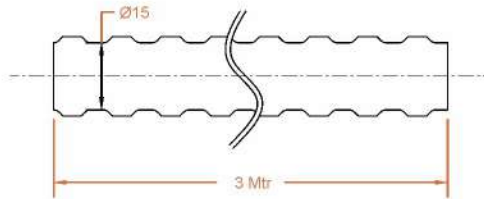
SIZE:
30x105mm-With Pin

HEX COUPLER, A/F 30x105 mm, with Pin, for Tie Bar 15 mm,
MILD STEEL, NATURAL, ZINC PLATED

Tie Bar (Cold Rolled)

Code
TB1501
TB1502

Finish
Natural
Natural



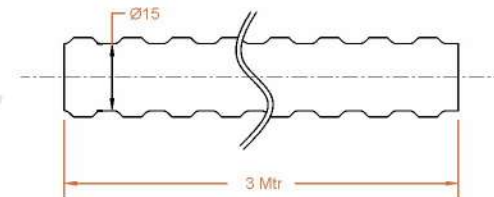
SIZE:
3 Mtr
6 Mtr

TIE Bar, 15 mm, Length 3000 mm
TIE Bar, 15 mm, Length 6000 mm

Tie Bar (Hot Rolled)

Code
TBH1501
TBH1502

Finish
Natural
Natural



SIZE:
3 Mtr
6 Mtr

TIE Bar, 15 mm, Length 3000 mm
TIE Bar, 15 mm, Length 6000 mm

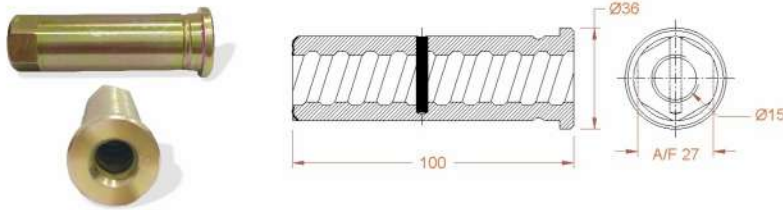


Steel Cone-Solid Core

Code
SC1501
SC1501-O

Finish
Natural
Golden Zinc Plated

SIZE:
Type MKK, 100mm, Dia 36, AF 27mm
for 15mm tie bar

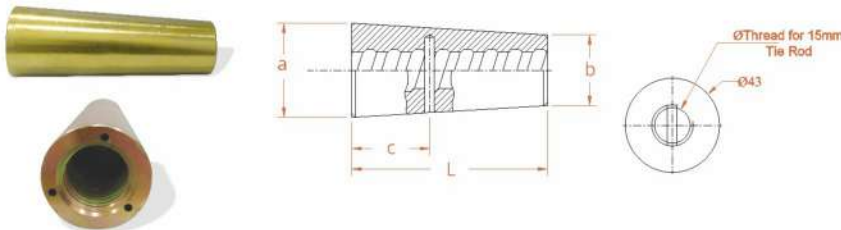


Steel Cone-Without Cap

Code
SN1501
SN1501-O

Finish
Natural
Golden Zinc Plated

SIZE:
a = Ø43mm
b = Ø30mm
c = 46mm
L = 98mm

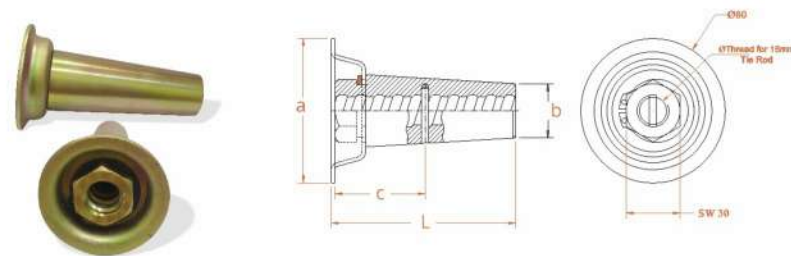


Steel Cone-With Cap

Code
SNC1501
SNC1501-O

Finish
Natural
Golden Zinc Plated

SIZE:
a = Ø80mm
b = Ø30mm
c = 50mm
L = 102mm
SW 30

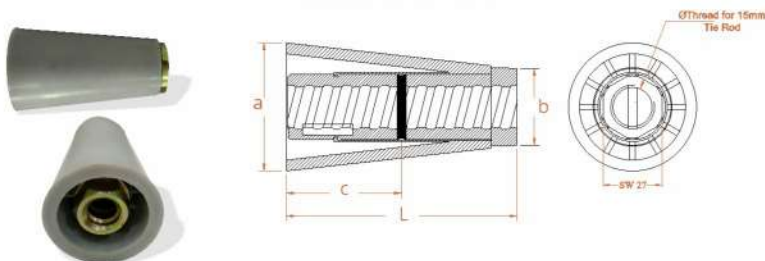


Steel Cone-Solid Core with plastic cone

Code
SCP1501
SCP1501-O

Finish
Natural
Golden Zinc Plated

SIZE:
a = Ø60mm
b = Ø40mm
c = 50mm
L = 100mm
SW 27

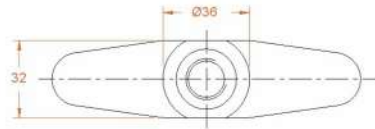
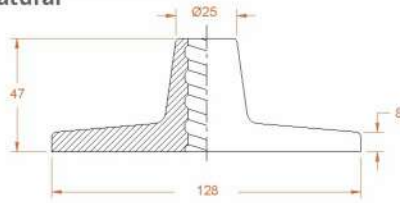


15 MM

Weldable Anchor

Code
WA1501

Finish
Natural



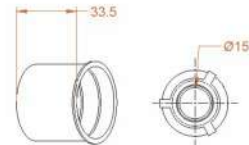
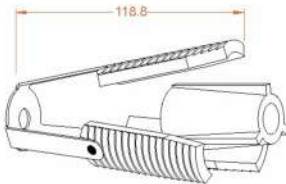
SIZE:
15mm

WELDABLE ANCHOR, Forged, 128x32x47 mm, for Tie Bar 15 mm, MILD STEEL, NATURAL

Rock Anchor

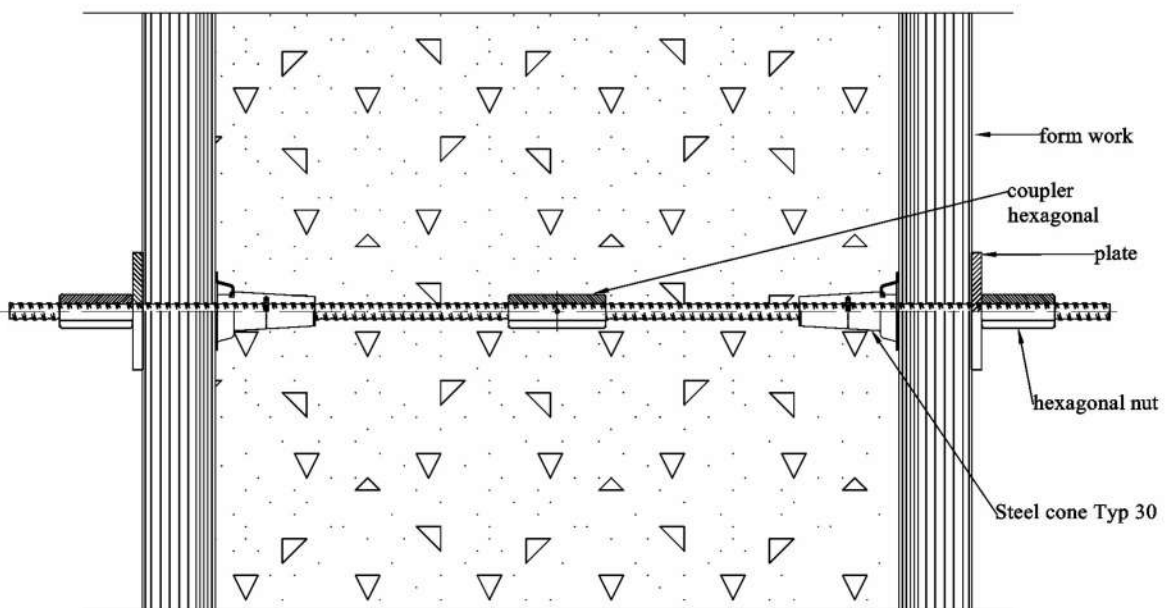
Code
RA1501

Finish
Natural



SIZE:
15 mm

ROCK ANCHOR, for Tie Bar 15 mm, MILD STEEL, NATURAL





REYNA
Formwork for Secure Connect



Formwork
Accessories

20 mm

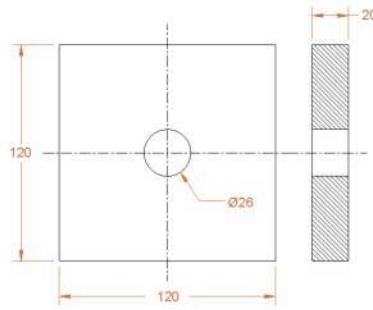
Waler Plate

Code
WP20120

Finish
Natural

SIZE:
120x120x20mm

WALER PLATE, 120x120x20.0 mm, Hole 26 mm, for Tie Bar 20 mm, MILD STEEL, NATURAL



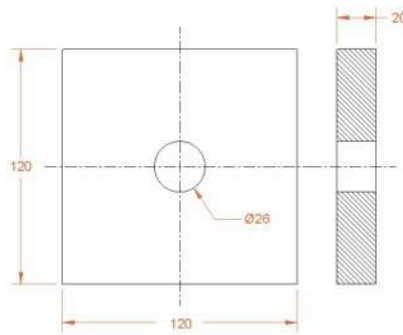
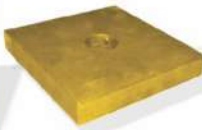
Waler Plate

Code
WP20120-O

Finish
Golden Zinc Plated

SIZE:
120x120x20mm

WALER PLATE, 120x120x20.0 mm, Hole 26 mm, for Tie Bar 20 mm, MILD STEEL, GOLDEN ZINC PLATED



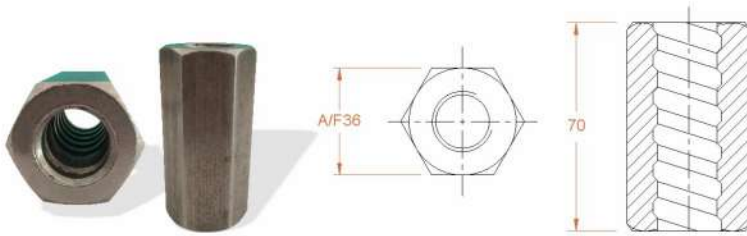
Tie Bar Connectors

Code
HN3670
HN3670-Z

Finish
Natural
Zinc Plated

SIZE:
36x70mm-Without Pin

HEX NUT, A/F 36x70 mm, for Tie Bar 20 mm,
MILD STEEL, NATURAL, ZINC PLATED



Tie Bar Connectors

Code
HC36130
HC36130-Z

Finish
Natural
Zinc Plated

SIZE:
36x130mm-With Pin

HEX COUPLER, A/F 36x130 mm, with Pin, for Tie Bar 20 mm,
MILD STEEL, NATURAL, ZINC PLATED



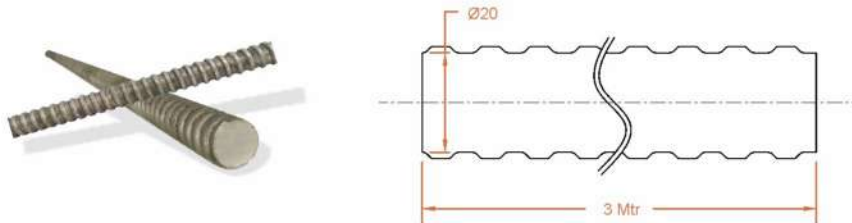
Tie Bar (Cold Rolled)

Code
TB2001
TB2002

Finish
Natural
Natural

SIZE:
3 Mtr
6 Mtr

TIE Bar, 20 mm, Length 3000 mm
TIE Bar, 20 mm, Length 6000 mm



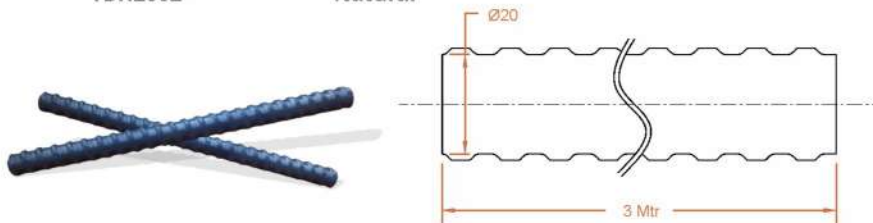
Tie Bar (Hot Rolled)

Code
TBH2001
TBH2002

Finish
Natural
Natural

SIZE:
3 Mtr
6 Mtr

TIE Bar, 15 mm, Length 3000 mm
TIE Bar, 15 mm, Length 6000 mm

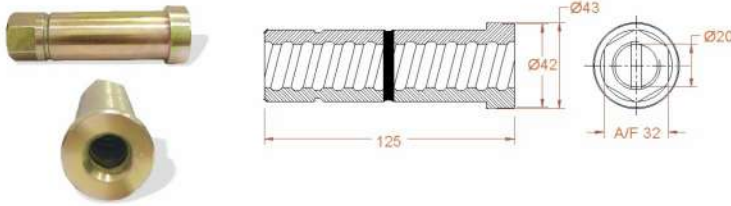


Steel Cone-Solid Core

Code
SC2001-O

Finish
Golden Zinc Plated

SIZE:
Type MKK, 125mm, Dia 43, AF 32mm
for 20 mm tie bar

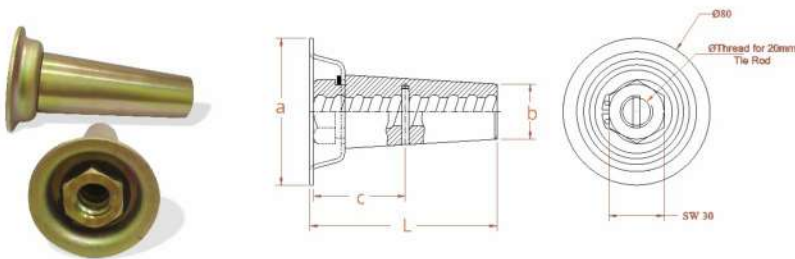


Steel Cone-With Cap

Code
SNC2001
SNC2001-O

Finish
Natural
Golden Zinc Plated

SIZE:
a = 78mm
b = 33mm
c = 65mm
L = 130mm

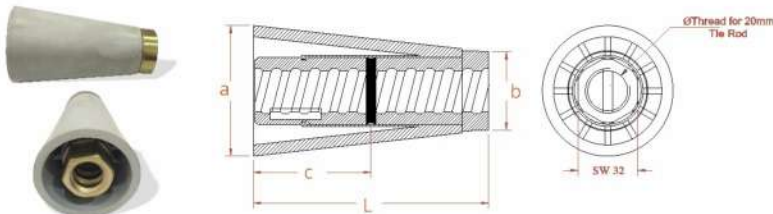


Steel Cone-Solid Core with plastic cone

Code
SCP2001
SCP2001-O

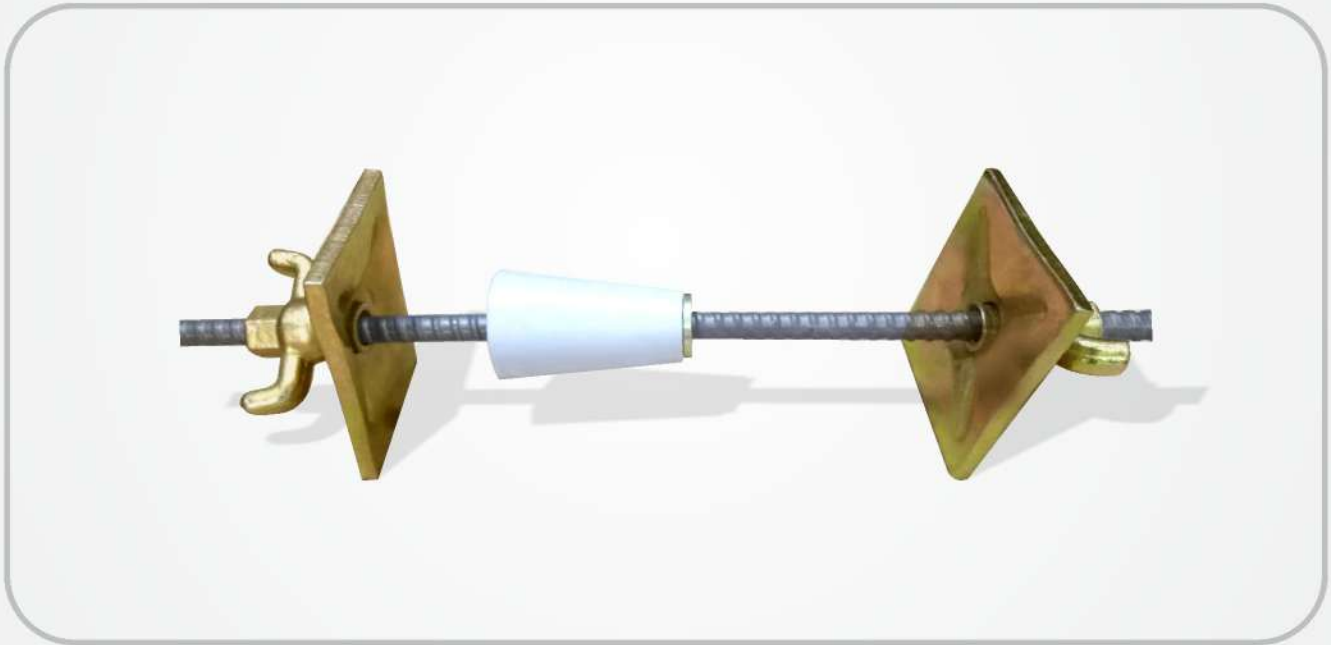
Finish
Natural
Golden Zinc Plated

SIZE:
a = 70mm
b = 40mm
c = 65mm
L = 126mm
SW 32





REYNA
Formwork for Secure Connect



Formwork
Accessories

26 mm

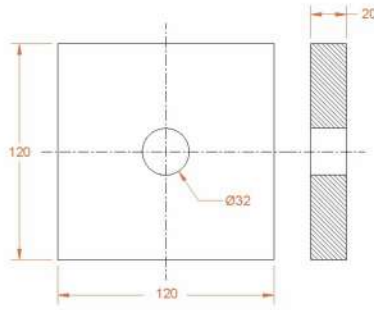
Waler Plate

Code
WP26120

Finish
Natural

SIZE:
120x120x20mm

WALER PLATE, 120x120x20.0 mm, Hole 32 mm, for Tie Bar 26 mm, MILD STEEL, NATURAL



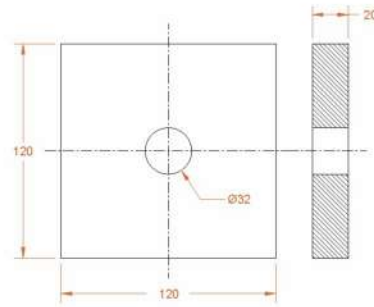
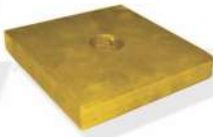
Waler Plate

Code
WP26120-O

Finish
Golden Zinc Plated

SIZE:
120x120x20mm

WALER PLATE, 120x120x20.0 mm, Hole 32 mm, for Tie Bar 26 mm, MILD STEEL, GOLDEN ZINC PLATED



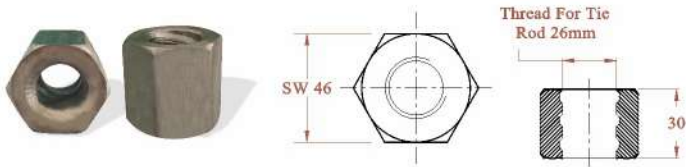
Tie Bar Connectors

Code
HN4630
HN4630-Z

Finish
Natural
Zinc Plated

SIZE:
 46x30mm

HEX NUT, A/F 46x30 mm, for Tie Bar 26 mm,
 MILD STEEL, NATURAL



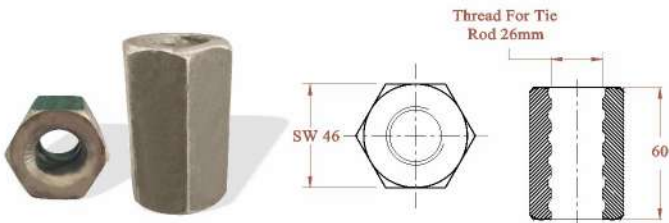
Tie Bar Connectors

Code
HN4660
HN4660-Z

Finish
Natural
Zinc Plated

SIZE:
 46x60mm

HEX NUT, A/F 46x60 mm, for Tie Bar 26 mm, MILD STEEL,
 NATURAL



Tie Bar Connectors

Code
HN4680
HN4680-Z

Finish
Natural
Zinc Plated

SIZE:
 46x80mm

HEX NUT, A/F 46x80 mm, for Tie Bar 26 mm,
 MILD STEEL, NATURAL



Tie Bar Connectors

Code
HC46120
HC46120-Z

Finish
Natural
Zinc Plated

SIZE:
 46x120mm with Pin

HEX COUPLER, A/F 46x120 mm, with Pin, for Tie Bar 26
 mm, MILD STEEL, GOLDEN ZINC PLATED



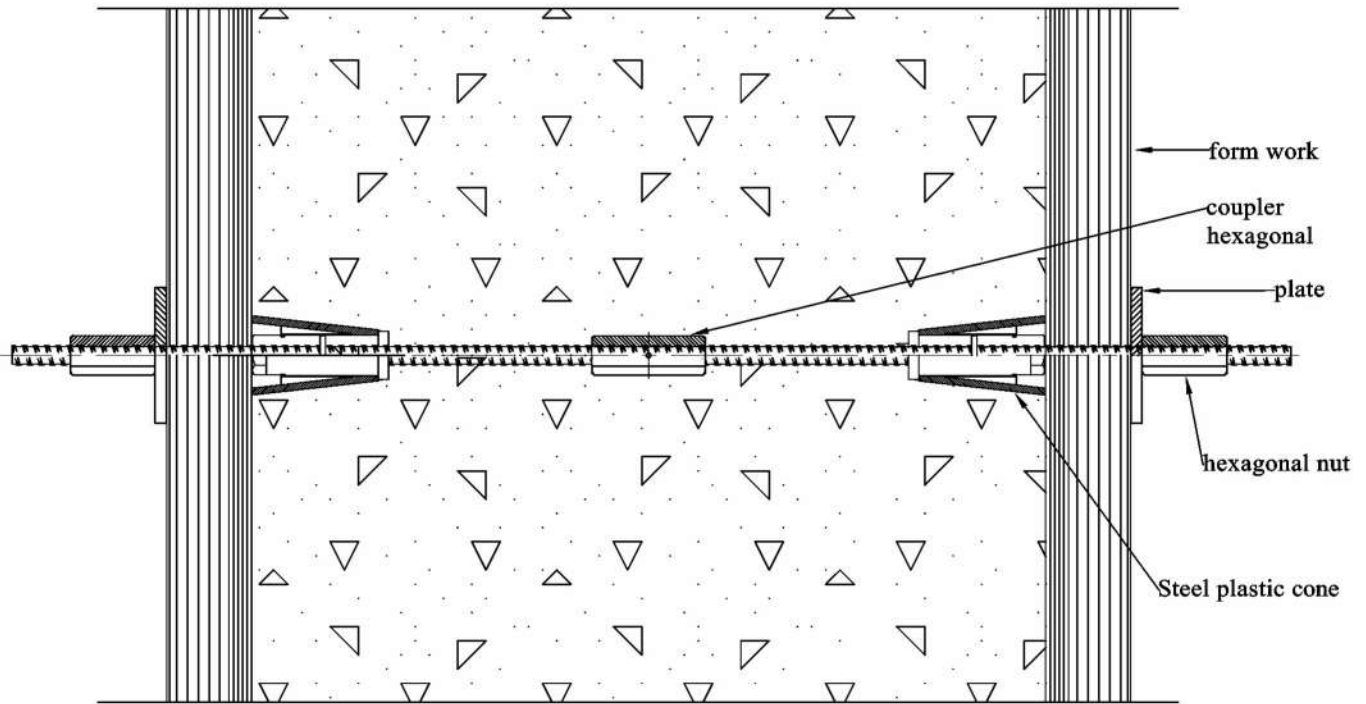
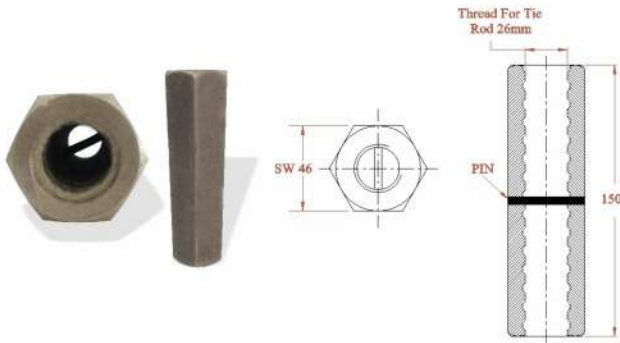
26 MM

Tie Bar Connectors

Code	Finish
HC46150	Natural
HC46150-Z	Zinc Plated

SIZE:
46x150mm with Pin

HEX COUPLER, A/F 46x150 mm, with Pin, for Tie Bar 26 mm, MILD STEEL, NATURAL

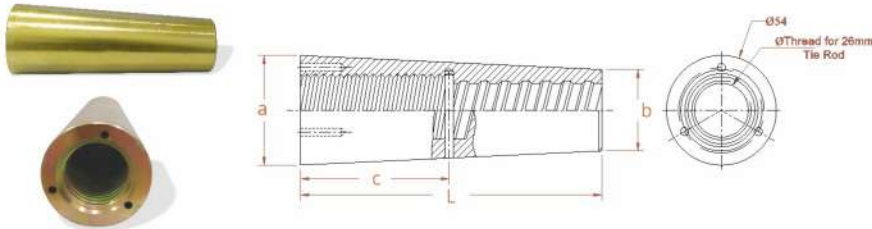


Steel Cone-Without Cap

Code
SN2601
SN2601-O

Finish
Natural
Golden Zinc Plated

SIZE:
a = Ø54mm
b = Ø40mm
c = 75mm
L = 150mm

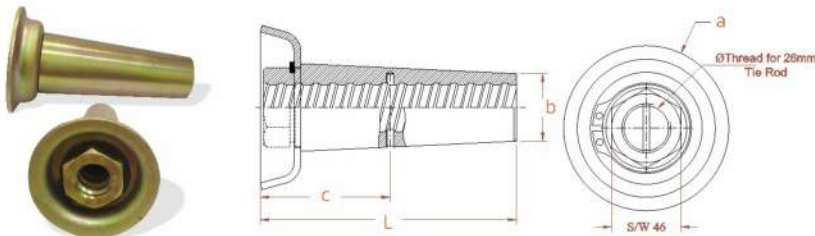


Steel Cone-With Cap

Code
SNC2601
SNC2601-O

Finish
Natural
Golden Zinc Plated

SIZE:
a = Ø98mm
b = Ø40mm
c = 80mm
L = 152mm
SW 46

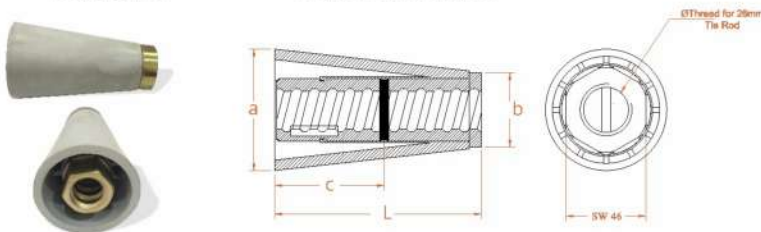


Steel Cone-Solid Core with plastic cone

Code
SCP2601
SCP2601-O

Finish
Natural
Golden Zinc Plated

SIZE:
a = Ø70mm
b = Ø57mm
c = 70mm
L = 135mm
SW 46



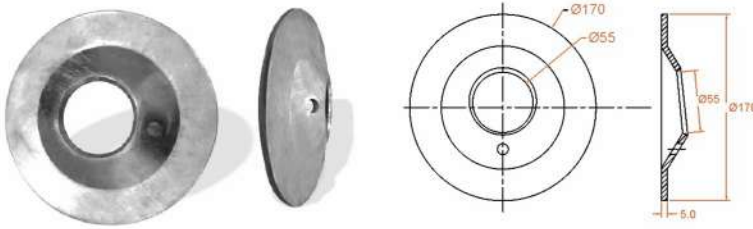
Waler Round Plate

Code
WF170-G

Finish
Hot Dip Galvanized

SIZE:

Dia 170 x 5.0 mm and Hall Dia 55.0



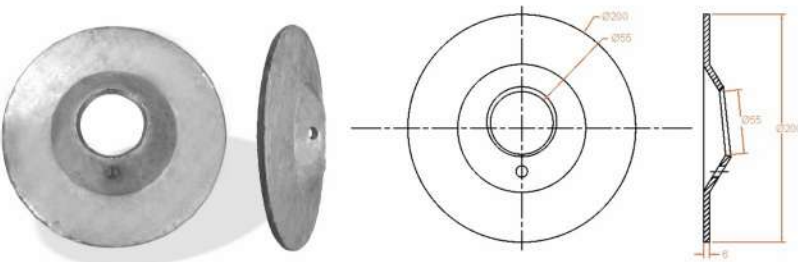
Waler Round Plate

Code
WF200-G

Finish
Hot Dip Galvanized

SIZE:

Dai 200 x 6.0 and Hall Dia 55.0



Black Annealed Tying Wire

Code
TW16

Finish
Black Annealed

SIZE:

16 Gauge



Stainless Steel Tying Wire

Code
TWS18

Finish
Natural

SIZE:

18 Gauge





Reyna Steels Limited

2, Giaspura Rd, Industrial Area C, Dhandari Kalan, Ludhiana, Punjab 141010



+91-76008-20000



www.reynasteels.com



sales@reynasteels.com



Ver 1.0 (2021)